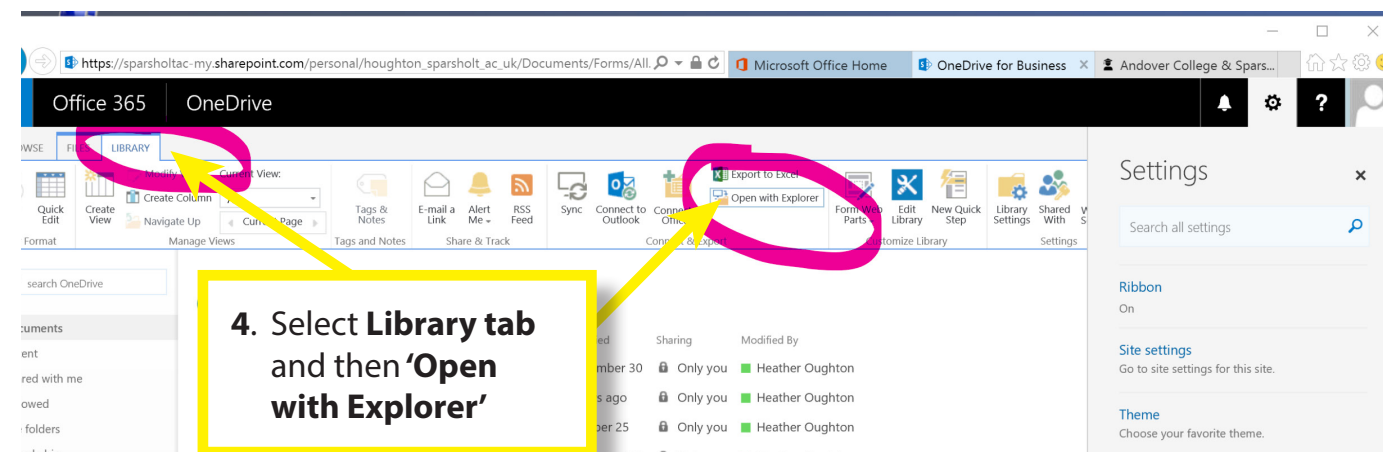
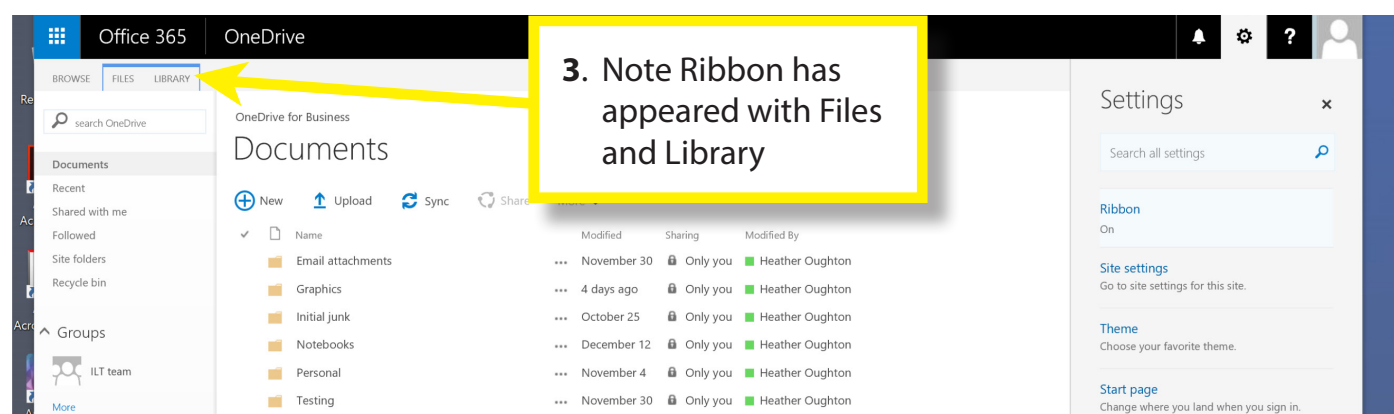
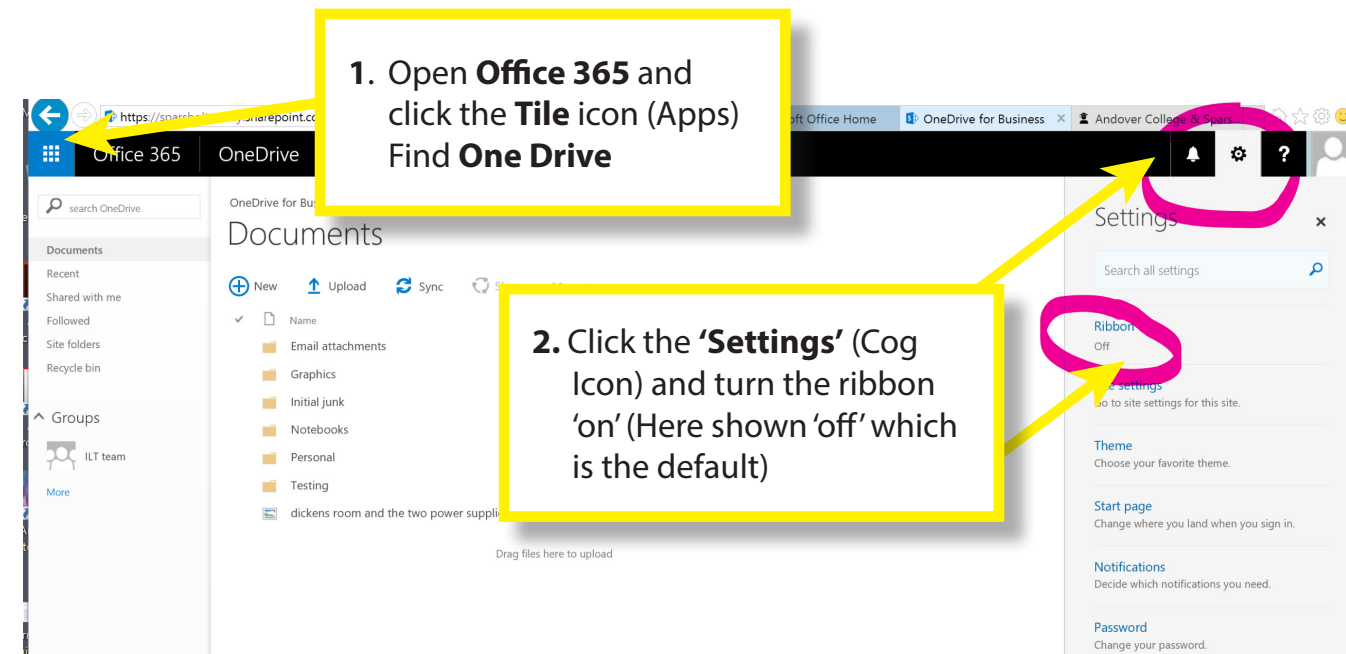
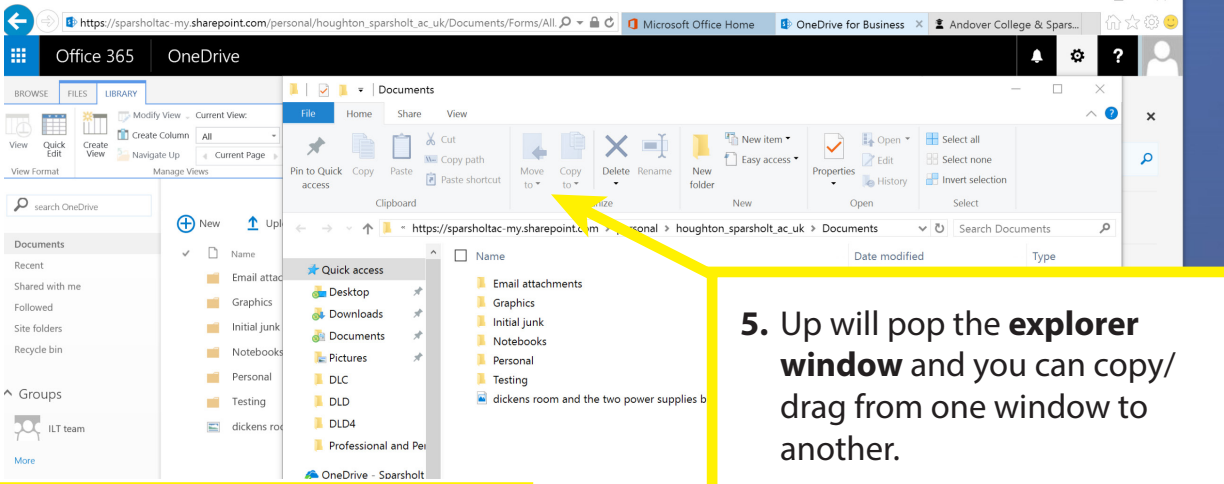


Assignment upload from One Drive Guidance Sheet

NB: You will need to use Internet Explorer as your browser for this to work.



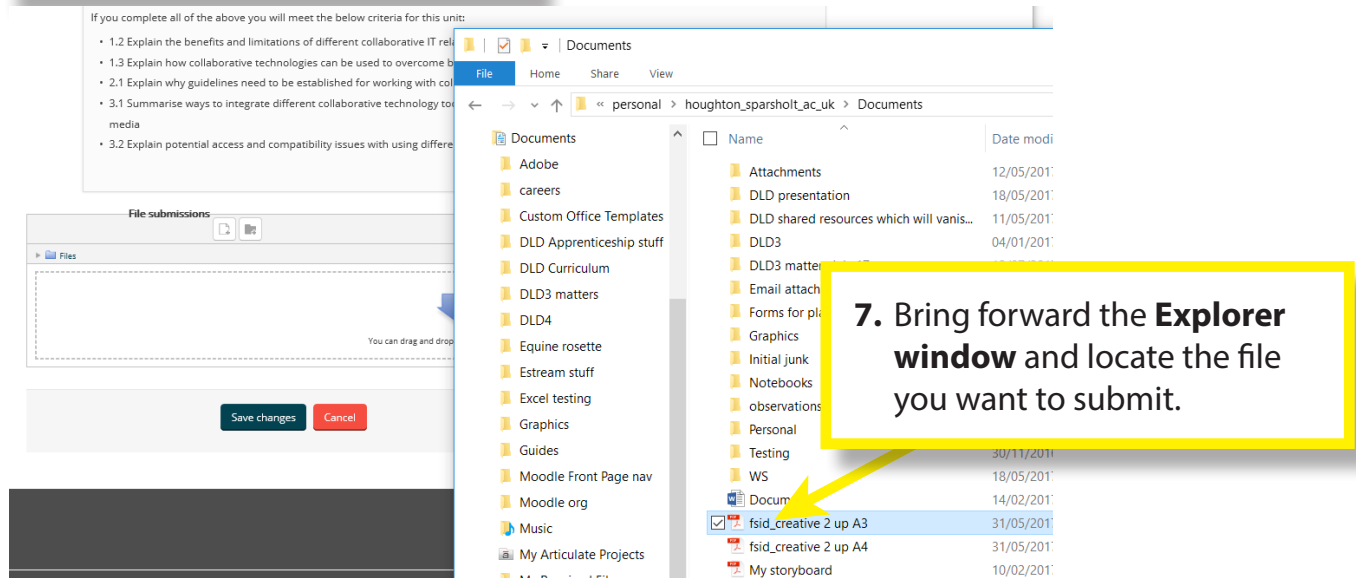
Assignment upload from One Drive Guidance Sheet



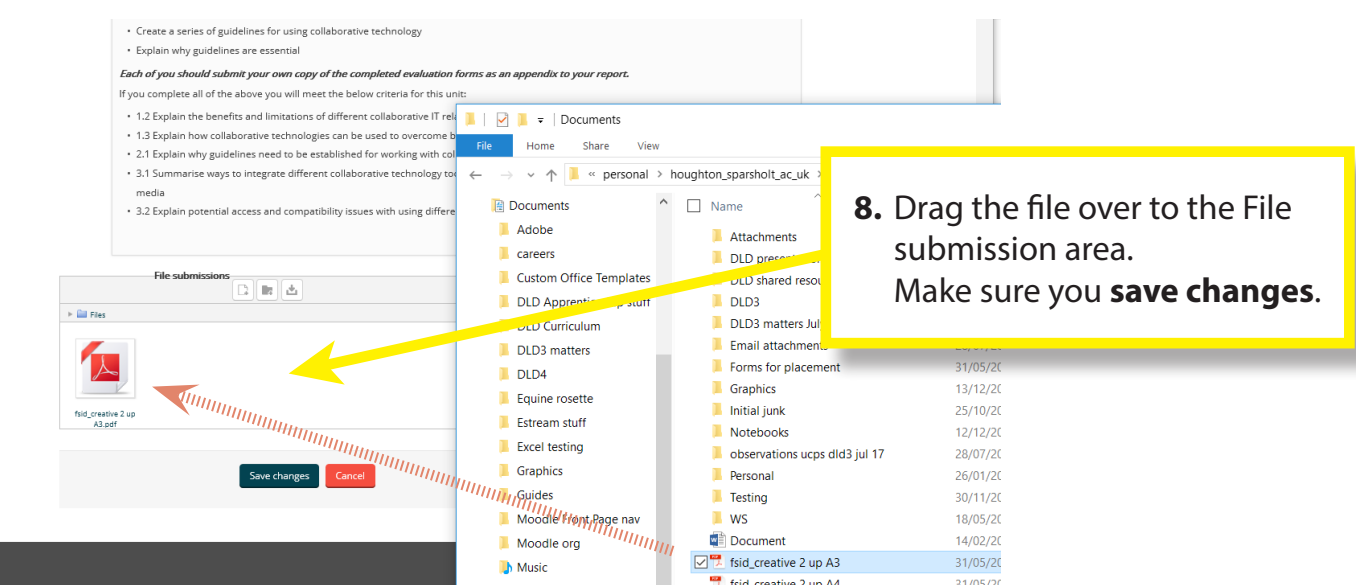
5. Up will pop the **explorer window** and you can copy/ drag from one window to another.

6. Navigate to the Assignment classroom and click **Add submission**

Add submission



7. Bring forward the **Explorer window** and locate the file you want to submit.



8. Drag the file over to the File submission area. Make sure you **save changes**.